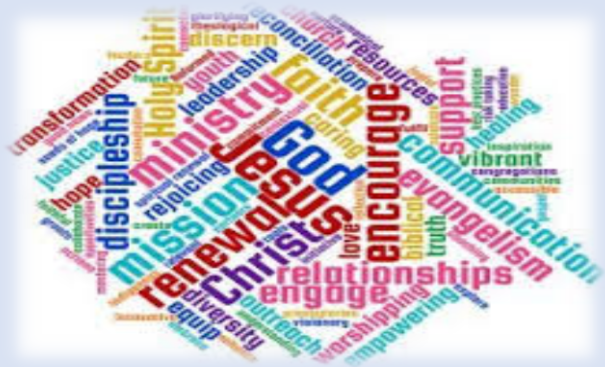


Oakleigh Community Church Project 2019 – Councillor Sowerby Appendix to CIL Request



Business Plan for Oakleigh Community

Oakleigh Community Church vision is to extend and redesign the existing current building as per the plans, which will enable Oakleigh to:

- ✓ Accommodate the increased capacity of the ever-growing congregation.
- ✓ Provide the church with maximum usage of increased space for the church and its community groups.
- ✓ To provide the wider community an opportunity of Faith and new life in Christ.

Oakleigh Community Church is a community of Christians, who over the years have seen a growing number of families and community groups welcome the church and the facilities it has to offer.

Oakleigh's' needs are to provide a larger expansion and habitable space - for not only our church community as mentioned above but also for our ever-growing residential community accessing Oakleigh. This includes being able to accommodate the increased capacity of our congregation, which at present can no longer fit into the current hall, and Oakleigh has temporarily relocated to the nearby school

Oakleigh's current ministries and activities

Oakleigh currently provides various ministries and activities such as:

- Weekly parent and toddler groups which is currently full to its capacity
- Messy Play run monthly
- Thursday Coffee run
- Holiday Clubs,
- Kids Holiday Lunch clubs,
- Youth Church,
- Kids Church,
- Mini church,
- Alpha courses,
- Small groups,
- Community Barbecues,
- Men's breakfast and social events,
- Women's breakfast and social events.
- Hub groups Prayer & praise / Engine room,
- High road outreach, Door to door ministry,
- Support for Philo Trust Pathway Marios
- Kenya Support Korean Church,
- Christian assemblies in local schools,
- Parenting classes,
- Summer activity mornings,
- Ever increasing numbers for Christmas and Easter services and events, East Barnet festival Outreach

Oakleigh is used by our external community business

Slimming world, Fitness classes, Ukrainian School, Kids dance & drama, Depression Alliance Hub groups, Baby & Mum Exercise Class, Parenting classes for Dads, Parenting and Family Carers Ass, Counselling Sessions.



Our New space

At Oakleigh, we see that the “new space” would enable us to provide further outreach to our community including our younger adults and the elderly.

The extra hall space will be utilised and enhanced with new equipment therefore creating a relaxed multiuse space suitable for all needs including disability. This will also mean Oakleigh will have its own administration office (at the moment administration is at St Barnabas Church).

This will release the pressure of continual trips across to St Barnabas, which will save time and allow for a better communication by giving a clearer and working environment for the church in one place.

Oakleigh Community Church is currently a very small building which has been added on over the years to accommodate its growth, however now there is no further ability to have any more temporary cabins. ***We believe that Oakleigh is now at a crucial stage where an achievable and solid management plan is needed to be implemented for the future growth of the Church, that can also impact the local and wider community.***

Oakleigh's capacity to home any further members of the community without significant health and safety issues is no longer possible. The church needs to restructure and update the existing building and outer house that are no longer fit for use. This will include creating a large expansion of space which would hold a capacity of at least 200 congregation members. Under the new plans we will be able to provide a café, a foyer and extra community space which in turn will increase the access and availability of the Oakleigh Church.

As stated already Oakleigh due to the expansion of the congregation has had to take an emergency plan of action and has taken a temporary location to All Saints school. ***This is not feasible for long term needs and is currently placing extra work loads on the church support team***

Oakleigh Community Church History

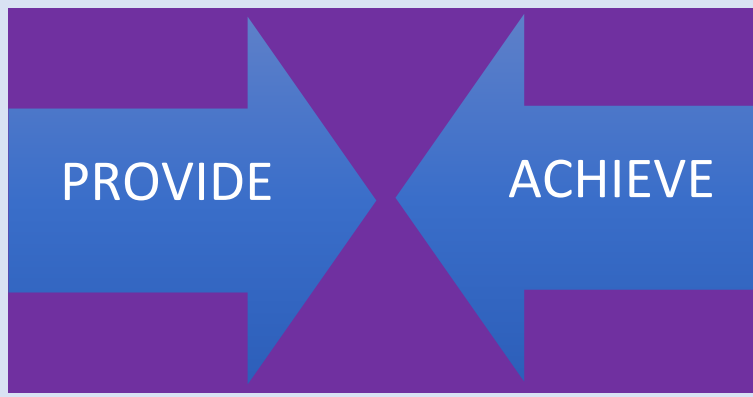


Oakleigh church began 2003 led by Rev Mike Pavlou as a church plant with 16 adults and 2 children.

The church plant grew to over 50 people in just 18 months. Over the next 18 years Oakleigh has been on an amazing journey of faith that has seen a steady further growth of well over 100 people, hence, the first porta cabin was erected in 2003/2004 to house the ever-growing congregation and youth groups. 2018/19 has seen another influx of people attending Oakleigh Community Church, therefore it is imperative that the church needs to release further space by modernising and expanding the current building.

Oakleigh Community Church Project 2019 – Councillor Sowerby Appendix to CIL Request

**Oakleigh community church now hold over a 100 adult's children and youth
with at least 17 different nationalities and is totally self - funded**



A larger auditorium enabling Oakleigh to accommodate the existing congregation and the need for future growth in the generations to come.

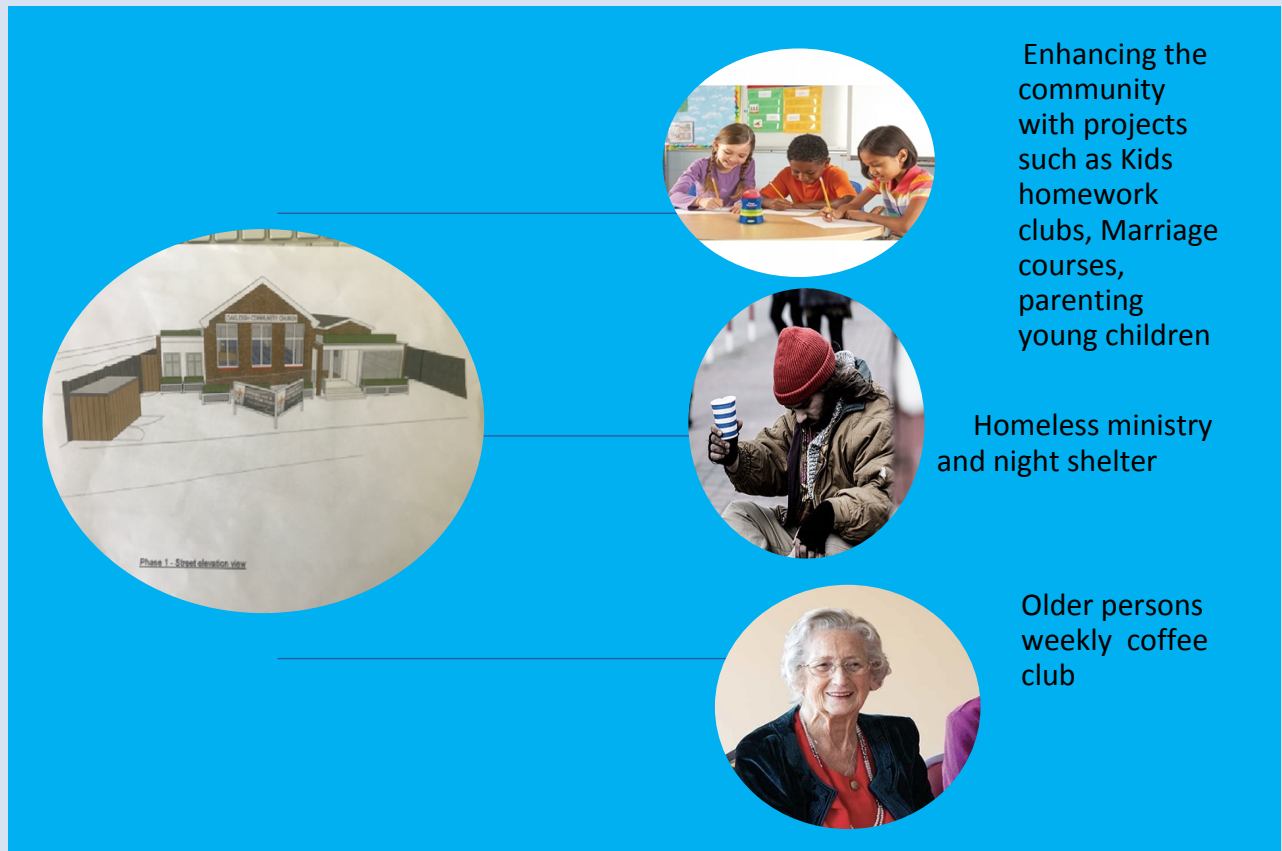
Oakleigh facilities will be updated, including the kitchen, toilet and disabled

Providing administrative office space ; a café, foyer and community space, which will enable Oakleigh to open its doors to the public during the week days, it will also be a “comfortable “ area for accessibility and will be a welcoming hub for all to engage and socialise.

Further increase in the hall sizes with a designed improved layout, will be equipped with the state of the art technology, enabling Oakleigh to reach out to all areas of the community including further letting out hall usage for the community.

Outcomes for the community of Oakleigh

Oakleigh Community Church Project 2019 – Councillor Sowerby Appendix to CIL Request

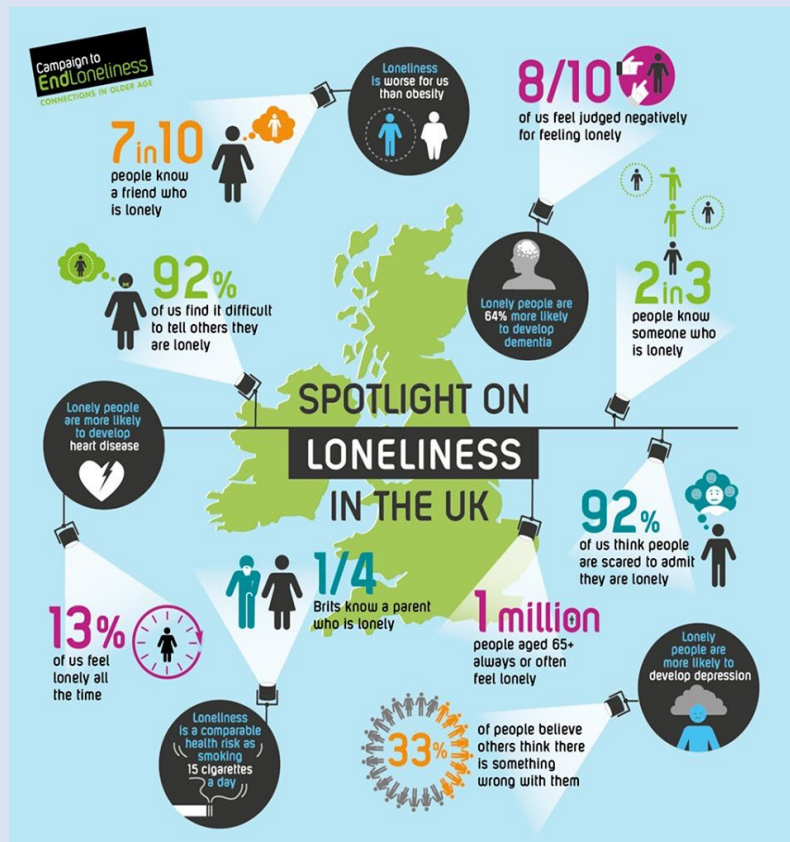


Oakleigh is the tenth largest of Barnet wards 5180.00 residents, with 34 percent being aged between 15-39. Oakleigh sees a wide range of ages in its community, therefore its needs are to deliver services to all of the community - the young and the old.

With this project, we could greatly increase the health and wellbeing of our community.

Educating our young adults around Social addictions providing knowledge and tools on how to live as a Christian in the world today. For instance, there is a growing concern over the misuse of alcohol and drug use - *according to some national statistics there are estimated 589101.00 dependant drinkers and only 20 percent are receiving treatment.*

Oakleigh Community Church Project 2019 – Councillor Sowerby Appendix to CIL Request



Hosting coffee mornings for the elderly will enable us to combat isolation, which can have a serious effect to an elderly's persons health, such as depression and loneliness. Coffee mornings for the elderly can create a social hub, enabling friendships to be nurtured. For those living on their own and are housebound this may be the only chance they get to socialise.

Oakleigh's aim is to create a family safe environment, by providing marriage guidance course's, and parenting young children and teens' course which will enable families to grow and add stability.

We believe providing Alpha courses and regular outreach to the community (outside of the church); encourages the community to learn more about Christianity in a comfortable and non-threatening atmosphere where we believe transparency and honesty are important in understanding faith.

We believe Oakleigh Community Church through the expression of Christ' love and his teachings, will create a solid and lasting foundation for building relationships, not just inside the Church but within the community.

Oakleigh Community Church Project 2019 – Councillor Sowerby Appendix to CIL Request



Accounts [See attachment.](#)

Project Manager: Rev Mike Pavlou

Consultants and Contractor: